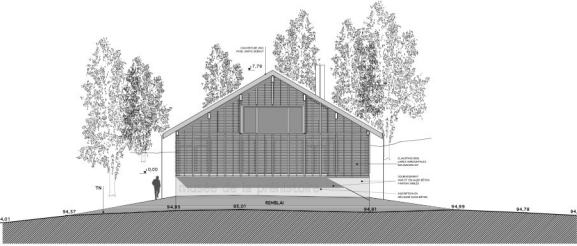


PLANS DU MUSÉE, EXTÉRIEUR ET INTÉRIEUR

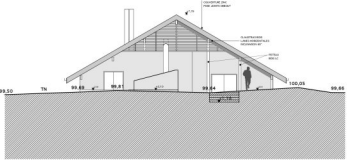
PLAN DE MASSE



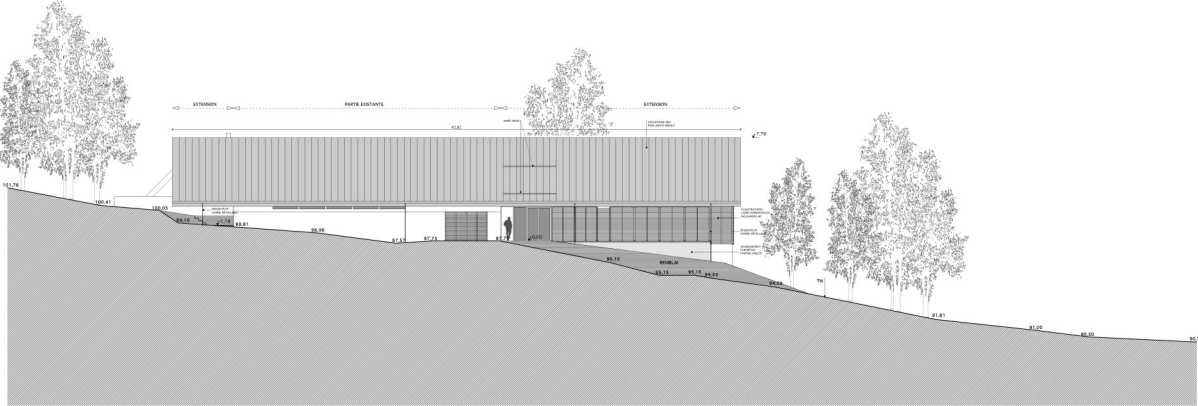
PLAN FAÇADES



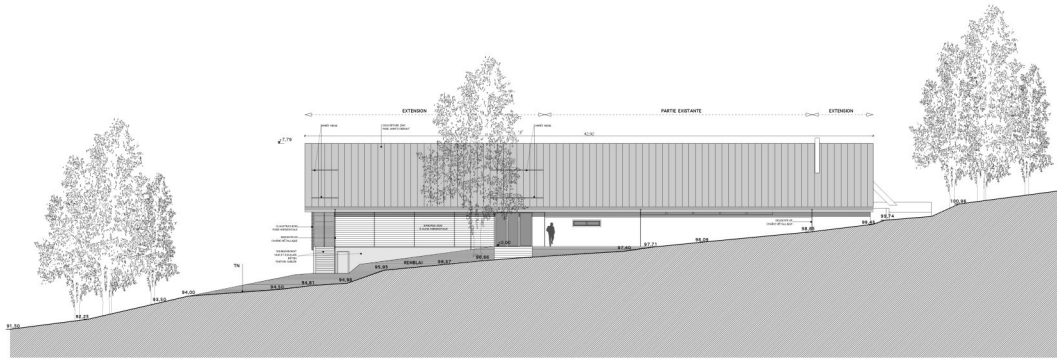
FACADE NORD EST



FACADE SUD OUEST

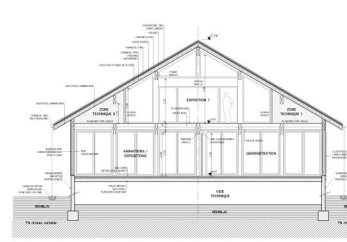


FACADE SUD EST

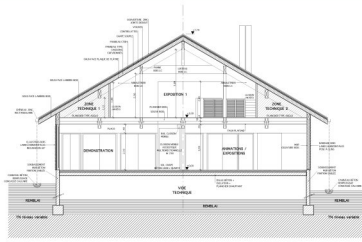


FACADE NORD OUEST

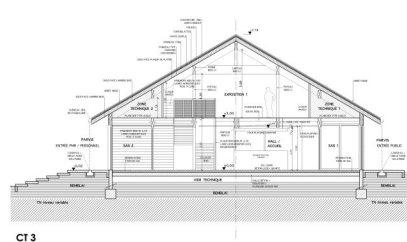
COUPES TRANSVERSALES



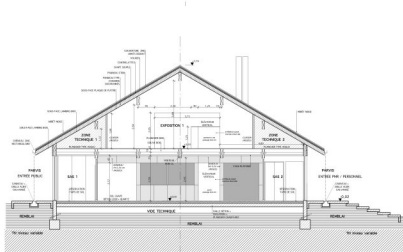
CT 1



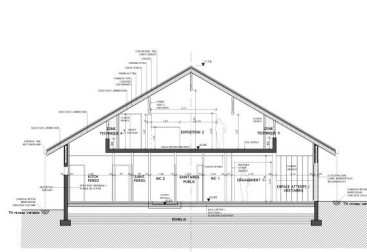
CT 2



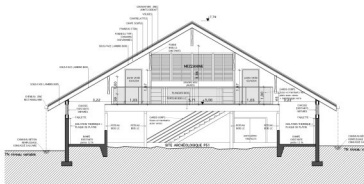
CT 3



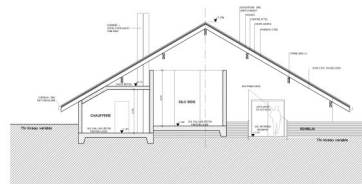
CT 4



CT 5

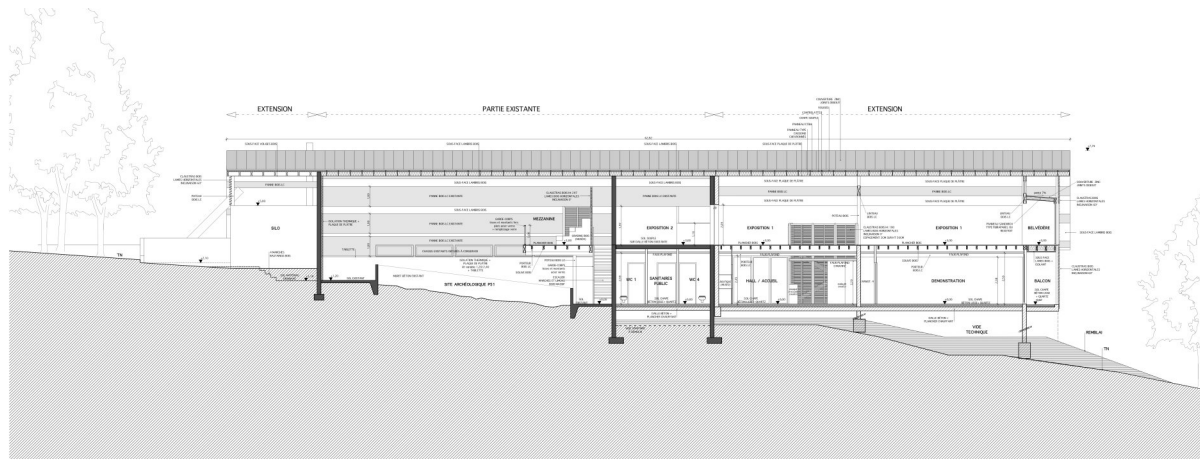


CT 6



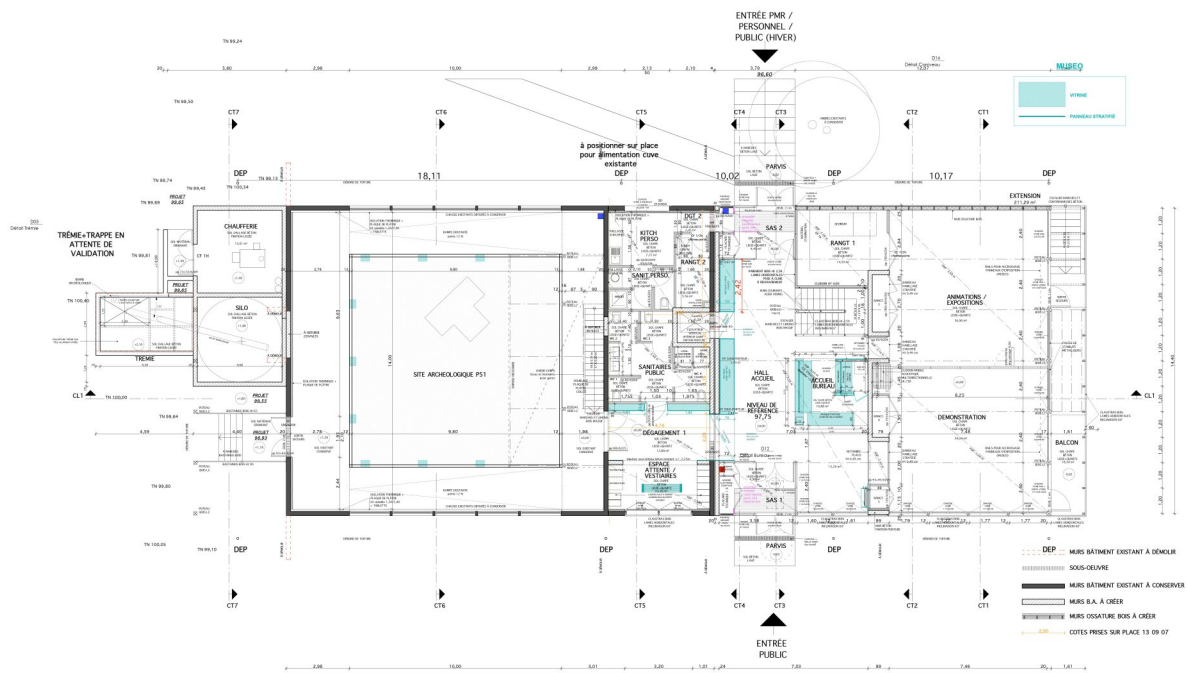
CT 7

COUPES LONGITUDINALES



CL 1
ECH : 1/50

PLAN REZ DE CHAUSSÉE



PLAN ÉTAGE

